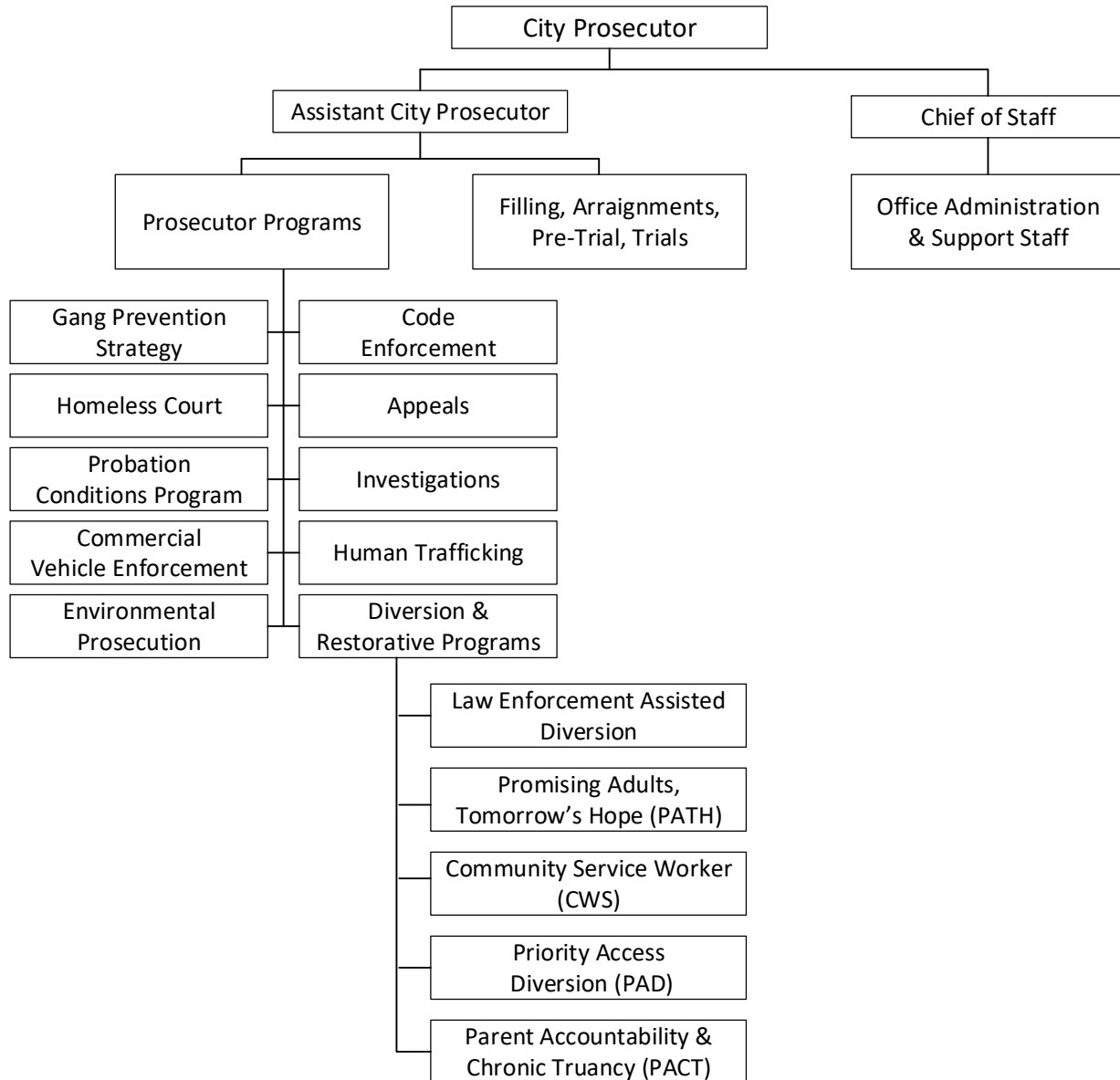


City Prosecutor



Mission Statement

It is our mission to ethically and effectively prosecute the guilty, protect crime victims, and improve the quality of life in Long Beach. We are committed to ensuring that justice is done.

Department Overview

Overview

The City Prosecutor is responsible for the prosecution of adult misdemeanor and infraction violations of state and local law, typically about 10,000-14,000 cases each year. The City Prosecutor's Office also handles appeals and writs of habeas corpus and provides legal opinions to city officials regarding penal ordinances.

Types of Cases Prosecuted

Cases prosecuted by the City Prosecutor range from relatively minor crimes to significant acts of violence; however, the District Attorney, not the City Prosecutor, prosecutes all felonies and juvenile cases.

The following is a small sampling of some of the crimes prosecuted by the City Prosecutor:

- Driving under the influence of alcohol or drugs
- Battery
- Supervising a Prostitute
- Overweight commercial vehicles
- Vehicular manslaughter
- Commercial Burglary
- Failure to register as sex offender
- Child and Elder abuse
- Lewd conduct in public
- Resisting or obstructing a law enforcement officer
- Cruelty to animals
- Vandalism
- Graffiti
- Reckless driving
- Building without a permit (e.g., garage conversion)
- Driving on suspended license
- Public Intoxication/Under the influence of drugs
- Violation of court order (includes gang injunctions)
- Domestic violence
- Hit and run
- Carrying concealed weapon
- Code Enforcement
- Unlicensed business
- Possession of heroin, cocaine, methamphetamine

Investigating Agencies

A number of state, county and city agencies and departments present cases to the City Prosecutor's Office. After an investigating agency presents a case for potential criminal prosecution, the City Prosecutor must independently review the facts and law to determine if the matter is appropriate for criminal prosecution. Examples of some investigating and referring agencies include:

- Long Beach Police Department
- Other City Departments including: Code Enforcement, Health and Human Services Department, Animal Care Services, Harbor Patrol, Fire Department, Building & Safety
- CA Contractors State Licensing Board
- CA Highway Patrol
- LA Sheriff's Department
- CA Department of Fish & Game
- Cal-OSHA
- Cal-EPA
- CSU Police Department
- Other prosecuting agencies (e.g., District Attorney, Attorney General)

Department Overview (Continued)

Priorities and Accomplishments

The Long Beach City Prosecutor's Office is true to its Mission Statement:

"It is our mission to ethically and effectively prosecute the guilty, protect crime victims, and improve the quality of life in Long Beach. We are committed to ensuring that justice is done."

Criminal Justice Innovations

The City Prosecutor's Office continues to be a national leader in criminal justice innovation. The office recently completed a mobile app called GUIDES with funding from the U.S. Department of Justice's Innovative Prosecution Solutions (IPS) Smart Prosecution Grant Program. Developed by Long Beach-based software company Laserfiche, the GUIDES app is now in use, assisting police officers to connect and reconnect persons suffering from mental illness, substance abuse, or homelessness to the services they need.

More recently, the City Prosecutor's Office won the largest grant in the history of the office, an award of \$900,000 to be expended over 3 years to create a new Law Enforcement Assisted Diversion (LEAD) pilot program with expanded areas to include all of Long Beach. LEAD is a pre-booking diversion program which involves law enforcement connecting people directly into social services from an initial contact. The first LEAD pilot was in Long Beach in 2017-2020, administered by the County of Los Angeles. Much was learned from the pilot program and we are well-positioned to expand LEAD citywide with this new grant opportunity. In addition, the new GUIDES app will be used by police and prosecutors involved in the LEAD program.

Leader in Court Diversion

The City Prosecutor's Office continues to be a leader in creative diversion programs that will reduce crime long term, save taxpayers money, and reduce court congestion. In 2016, the Office initiated the Promising Adults, Tomorrow's Hope (PATH) program to assist 16-24 year-old offenders. Diverting youthful offenders into educational programs, employment services and career opportunities not only saves taxpayers money, but it helps to improve the rehabilitative outcomes for justice-involved persons.

The PATH program is believed to be the first of its kind in the country. PATH grew rapidly but had to be suspended during the COVID pandemic. Coming out of the pandemic, the City Prosecutor's Office plans to partner with Long Beach City College and others, and the eligibility has recently been changed to potentially allow participants over the age of 24.

Another program for which the department is nationally known is the City Prosecutor's Community Service Worker (CSW) program, also known as CSW. In 2016, the City Prosecutor's Office was recognized by Neighborhoods USA, as the "Best Neighborhood Program" in America. This award was given by NUSA at its annual conference in Memphis, TN, in the *Physical Revitalization* category. NUSA stated:

"In Long Beach, Calif., neighborhood groups and non-profit organizations get more done in less time with help from the City's Community Service Worker program, implemented by the Long Beach City Prosecutor's Office. What started as court diversion has grown into an innovative program that beautifies and restores public areas while empowering individuals and saving taxpayers money."

Department Overview (Continued)

The CSW program allows low level, first-time offenders to perform community labor in lieu of facing jail time or significant fines (which often go unpaid). The CSW program has saved taxpayers hundreds of thousands of dollars over the past 8 years, while beautifying and improving our public beaches, wetlands, parks, and streets.

The Priority Access Diversion (PAD) program is a court-based alternative sentencing program focusing on the most chronic offenders in Long Beach who also suffer from mental health and/or substance abuse. PAD provides a residential (live-in) treatment program as an alternative to incarceration in jail, and the City Prosecutor's Office has dedicated one prosecutor and one social worker to focus on assisting PAD-eligible defendants. Due to the continuing rise in homelessness and the reluctance of some people to accept treatment, the PAD program is expected to become a growth area for the City Prosecutor's Office. In conjunction with PAD, the City Prosecutor's Office started a Homeless Court project with funding from Los Angeles County Supervisor Janice Hahn. This project assists homeless people with services as well as old, nonviolent criminal cases.

Environmental Prosecution

The City Prosecutor's Office continues to expand the work of its Environmental Prosecutions section started six years ago with a \$50,000 grant from the National Fish and Wildlife Foundation (NFWF). In addition to handling cases referred by the California Department of Fish and Game, the office looks for other areas where it can advance the work of protecting the environment.

One area that remains active is in commercial vehicle enforcement. While most trucking companies go to great lengths to comply with all environmental and safety regulations, some businesses attempt to gain a competitive advantage by carrying unsafe loads. In one example, the City Prosecutor's Office secured what is believed to be the largest misdemeanor court fine ever in the history of the Long Beach Courthouse against a trucking company which pleaded "no contest" to 47 misdemeanor counts and was ordered to pay fines and penalties in excess of \$460,000 for transporting dangerous and overweight loads in violation of State law.

RISE Program

Although there is no longer funding for the City Prosecutor's Office to aid with post-conviction relief, the office is looking for ways to continue this work. The City Prosecutor's Restoration Initiative for Safety and Employment (RISE) provides post-conviction relief and expands pre-filing diversion programs designed to hold first-time offenders accountable while reducing the impact of criminal convictions. In partnership with several local community groups throughout Long Beach, free "fresh start" events were held to assist residents. Although the program is no longer receiving funds, the City Prosecutor's Office is actively looking for funding and for community partners to engage in this meaningful work.

Protecting Tenants from Discrimination

The City Prosecutor recently added a program to protect residential tenants from discrimination or harassment based on gender, race, religion, national origin, sexual identity, sexual orientation, or source of income. Working with the Long Beach Housing Authority, complaints of discrimination or harassment are investigated and, if appropriate, prosecuted. In addition, the City Prosecutor's Office has developed educational materials for tenants and landlords. For more information, visit www.fairhousinglb.com.

3P Neighborhood Program

The 3P Neighborhood Program was started with one-time funding from the Long Beach City Council. Based on community needs, the 3P Neighborhood Program is a localized strategy that works closely with the Long Beach Police Department, neighborhood and business associations, and other stakeholders to

Department Overview (Continued)

address persistent crime problems. Although it was initiated with one-time funding, the Long Beach City Prosecutor's Office is actively seeking grants and other funding sources to make this program sustainable and permanent. More details about the 3P Neighborhood Program, including its associated programs, can be found here: <https://cityprosecutordoughaubert.com/3p-neighborhood-program/>.

Budget Constraints

One of the most important priorities for the City Prosecutor's Office is to stabilize funding which was significantly cut during the last recession and has never been fully restored. Despite those cuts, the City Prosecutor's Office has taken on even more responsibility, including the development of innovative, award-winning diversion and alternative sentencing programs. Future cuts could impair the department's ability to continue some of its programs or fulfill its charter-mandated duties and jeopardize public safety.

The Department continues to look for new sources, such as grants and cost recovery programs, to stabilize funding so it can accomplish its duties. Innovative programs, such as the PATH diversion program, the Community Service Worker (CSW) program, and environmental prosecution each year are threatened with elimination by budget uncertainty.

For a more detailed list of the City Prosecutor's programs and accomplishments, visit: www.CityProsecutorDougHaubert.com.

Financial Summary by Category

	Actual	Adopted*	Adjusted**	Adopted*
	FY 22	FY 23	FY 23	FY 24
Revenues:				
Property Taxes	-	-	-	-
Sales and Use Taxes	-	-	-	-
Other Taxes	-	-	-	-
Utility Users Tax	-	-	-	-
Franchise Fees	-	-	-	-
Licenses, Permits and Fees	-	-	-	-
Fines and Forfeitures	-	-	-	-
Use of Money & Property	-	-	-	-
Revenue from Other Agencies	(16,059)	-	505,146	-
Charges for Services	32,509	129,616	129,616	126,640
Other Revenues	20	-	-	-
Intrafund Services	-	-	-	-
Intrafund Transfers	338,454	-	-	-
Interfund Services	-	-	-	-
Interfund Transfers	-	-	-	-
Other Financing Sources	-	-	-	-
	-----	-----	-----	-----
Total Revenues	354,924	129,616	634,762	126,640
Expenditures:				
Salaries and Wages	3,519,822	3,499,319	4,237,204	3,872,722
Employee Benefits	2,069,091	2,349,316	2,349,316	2,391,626
Overtime	51,264	4,000	4,000	4,000
Materials, Supplies and Services	179,596	258,016	414,949	258,016
Interfund Support	572,295	542,395	542,395	610,202
Intrafund Support	-	-	-	-
Capital Purchases	-	-	-	-
Insurance Premiums and Losses	-	1,841	1,841	1,841
Other Non-Operational Expenditures	-	-	-	-
Operating Transfers	-	-	-	-
Intrafund Transfers Out	338,454	-	-	-
Purchase of Gas & Water	-	-	-	-
Depreciation and Non Cash Expenditures	-	-	-	-
	-----	-----	-----	-----
Total Expenditures	6,730,523	6,654,887	7,549,704	7,138,407
Budgeted FTEs	38.38	38.38	38.38	38.38

* Amounts exclude all-years carryover. See budget ordinance in back of this document.

**Adjusted Budget as of April 30, 2023.

Note: The City is currently maintaining two different financial systems and until a new budget development software is established, the financial information displayed in the future may have further adjustments.

Personnel Summary

Classification	FY 22 Adopt FTE	FY 23 Adopt FTE	FY 24 Adopt FTE	FY 23 Adopted Budget	FY 24 Adopted Budget
City Prosecutor	1.00	1.00	1.00	266,775	280,112
Assistant City Prosecutor	1.00	1.00	1.00	217,368	237,234
Chief of Staff - Prosecutor	1.00	1.00	1.00	136,477	153,477
Community Service Worker Program Coord	1.00	1.00	1.00	82,127	80,204
Deputy City Prosecutor	2.50	2.50	1.00	236,033	104,268
Deputy City Prosecutor I	2.70	2.70	4.50	311,017	522,931
Deputy City Prosecutor II	2.00	2.00	1.70	226,848	234,068
Deputy City Prosecutor III	4.00	4.00	4.00	537,056	481,544
Deputy City Prosecutor IV	3.00	3.00	1.00	501,127	108,468
Investigator - City Prosecutor	1.23	1.23	1.23	108,352	89,754
Legal Technologist - Prosecutor	1.00	1.00	1.00	108,317	86,984
Office Specialist - Prosecutor	0.45	0.45	0.45	46,545	46,768
Paralegal-Prosecutor	3.50	0.50	0.50	36,994	37,171
Program Specialist - City Prosecutor	1.00	1.00	1.00	74,852	85,662
Prosecutor Assistant	1.00	-	-	-	-
Prosecutor Assistant I	5.00	5.00	3.00	320,766	198,416
Prosecutor Assistant II	1.00	5.00	5.00	364,410	357,197
Prosecutor Assistant III	3.00	1.00	3.00	79,620	241,872
Prosecutor Assistant IV	-	2.00	2.00	171,929	172,754
Senior Prosecutor Asst	2.00	2.00	2.00	173,005	183,820
Supervising Prosecutor Asst	1.00	1.00	1.00	101,173	113,751
Supervisor - Deputy City Prosecutor	-	-	2.00	-	390,658
Subtotal Salaries	38.38	38.38	38.38	4,100,790	4,207,113
Overtime	-	-	-	4,000	4,000
Fringe Benefits	-	-	-	2,243,676	2,293,687
Administrative Overhead	-	-	-	105,640	97,939
Attrition/Salary Savings	-	-	-	(701,471)	(334,391)
Expenditure Transfer	-	-	-	-	-
Total	38.38	38.38	38.38	5,752,634	6,268,348

Key Contacts

Douglas P. Haubert, City Prosecutor

Randall Fudge, Assistant City Prosecutor

Sherri Seldon, Chief of Staff

411 W. Ocean Boulevard, 8th Floor

Long Beach, CA 90802

Phone: (562) 570-5600

Fax: (562) 570-5698

prosecutor@longbeach.gov

www.CityProsecutorDougHaubert.com