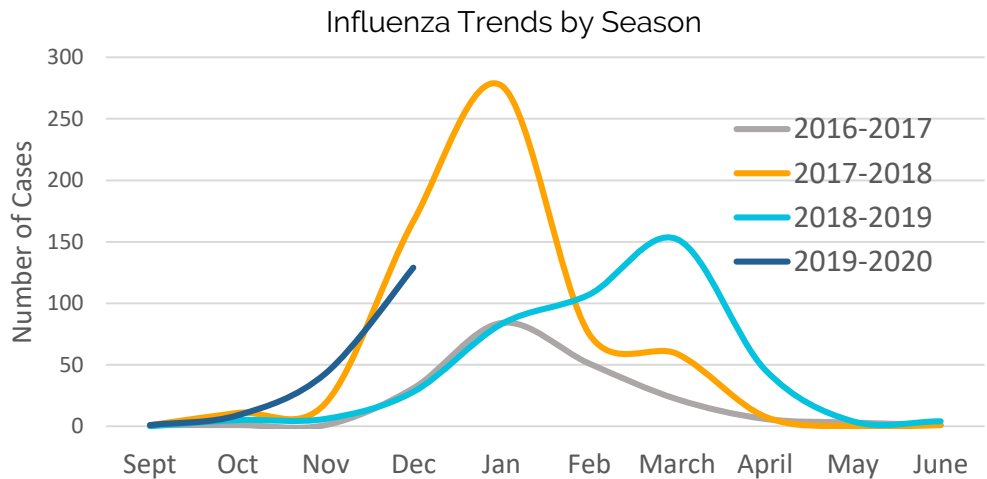
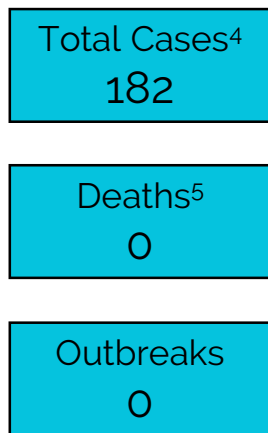


## 2019-2020 HIGHLIGHTS

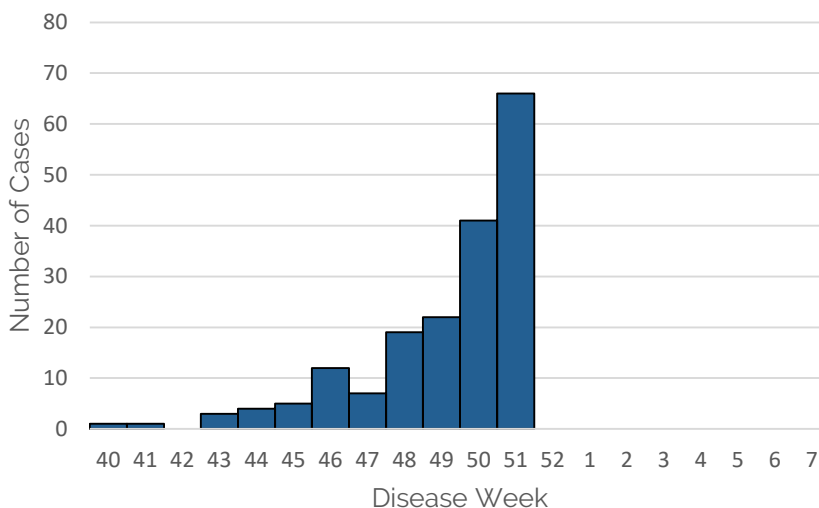
Influenza activity is now widespread in California with elevated activity in Long Beach compared to previous years. During week 51 (12/15-12/21), 32.4% of specimens in CA<sup>1</sup> tested for influenza tested positive. Influenza B/Victoria viruses are the predominant strain so far this season,<sup>3</sup> which is unusual for this time of year. Although no influenza associated deaths have been reported in Long Beach this season, 9.3% of deaths in Los Angeles County were caused by pneumonia or influenza during week 50.<sup>3</sup> In Long Beach, the median age of flu reports is 14 (0-96), and 56% are less than 18 years old. Everyone 6 months and older needs a flu shot each year.

On October 1, 2019, laboratories were mandated to report all cases of influenza for the first time. This may lead to an increase in the number of cases reported this season compared to past seasons.

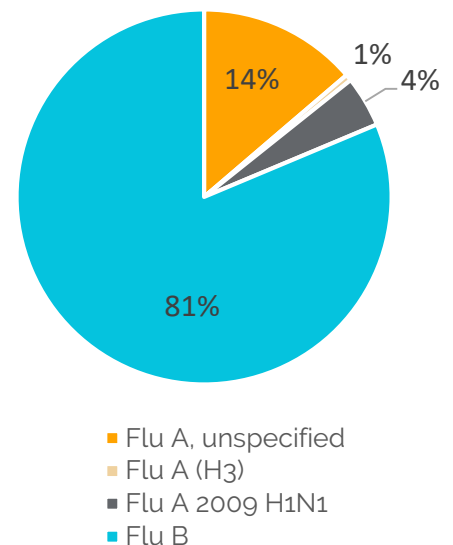
## LONG BEACH SEASON SUMMARY



Influenza Laboratory Detection by Week 2019-2020



Virus Characteristics 2019-2020



1. Influenza and Other Respiratory Viruses Weekly Report. California Influenza Surveillance Program, CDPH, Week 51.
2. Influenza Watch, Week 51. Los Angeles County Department of Public Health. Updated December 20, 2019.
3. Weekly U.S. Influenza Surveillance Report, CDC. <https://www.cdc.gov/flu/weekly/index.htm>
4. Total case counts are based on those reported to public health, the true number of influenza cases may be under-reported. Due to lag in reporting, number of cases may change in the following weeks.
5. Number of deaths is based on influenza-coded deaths from death certificates. They are not necessarily laboratory-confirmed and may be an underestimate of all influenza-associated deaths.